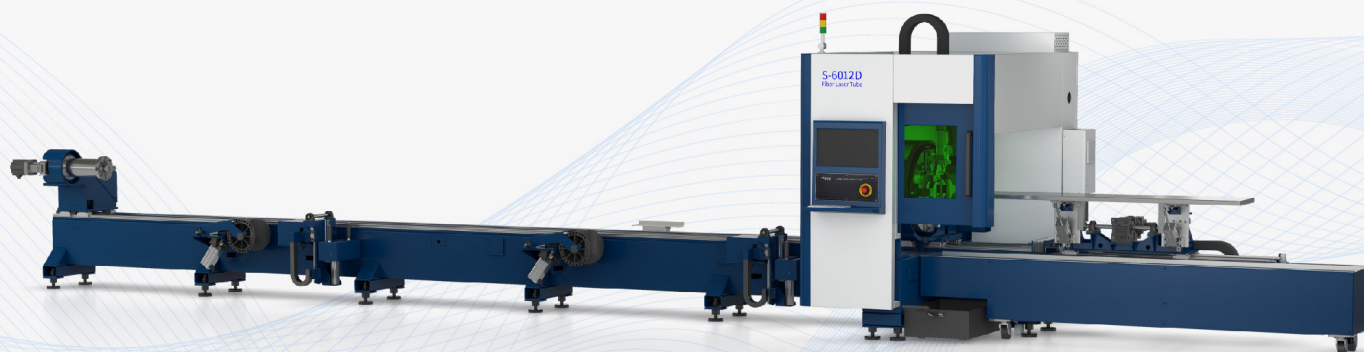




PROVIDER OF LASER & AUTOMATION
INTEGRATED SOLUTIONS

S SERIES

Standard Laser Tube Cutting Machine



COMPANY INTRODUCTION



Hymson Laser Technology Group Co., Ltd founded in 2008, is a national high-tech enterprise, which integrates research and development, manufacturing, sales and service in laser and automation integrated solutions provider.



11
Subsidiaries



7000+
Employees Global



Hundreds
Patents



Thousands
Cooperative Enterprises



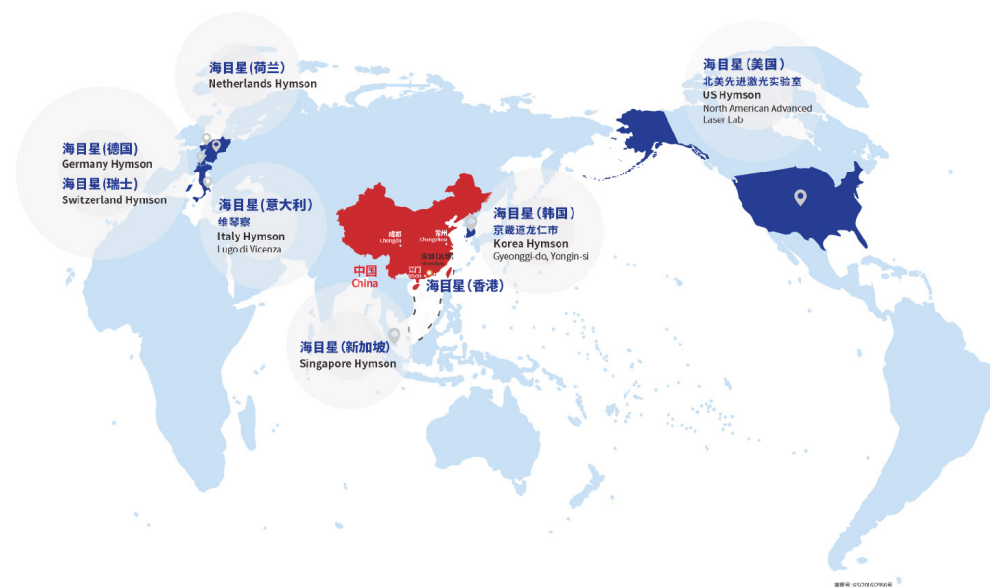
400 million
R&D Investment



40+
Global Service Centers

AS A GLOBAL ENTERPRISE

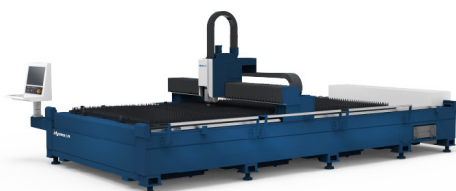
WE PROVIDE HIGH QUALITY AND EFFICIENT PRE-SALES AND AFTER-SALES SERVICE



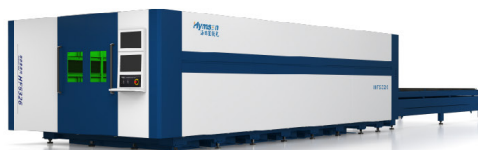
Transforming the Global Equipment Landscape
Advancing Human Intelligent Manufacturing

PRODUCT CATALOG

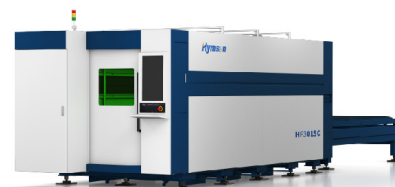
SHEET METAL LASER CUTTING MACHINE



HF-A SEIRES(Single Platform)

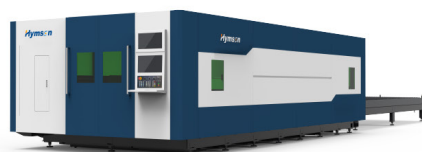


HF-B SERIES(High Power)

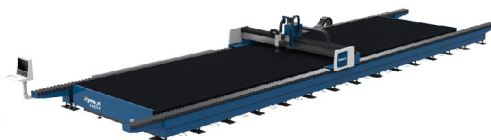


HF-C SERIES(Dual-platform)

SHEET METAL LASER CUTTING MACHINE



HF-G SERIES(Flagship Product)



HF-T SERIES(Large Format)



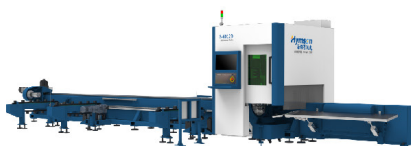
HP SERIES

SPECIAL PROFILE LASER CUTTING MACHINE

TUBE METAL LASER CUTTING MACHINE



MP SERIES(Professional)



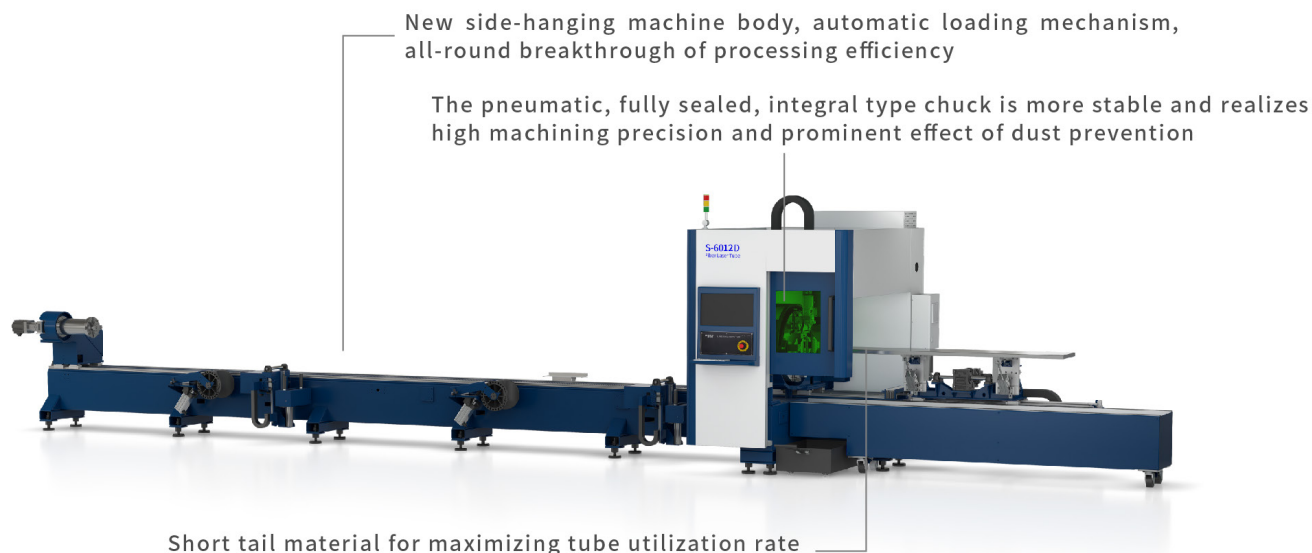
S SERIES(Standard)



TP SERIES(Heavy-duty)

S SERIES

Standard Laser Tube Cutting Machine



Core Configuration

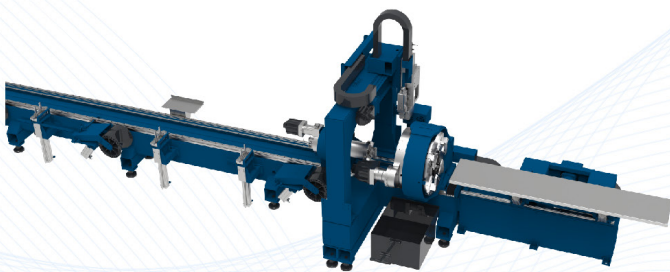
Model	S6012 Pro	S6024 Pro
Control System	FSCUT	FSCUT
Cutting Head	Hymson	Hymson
Fiber Laser	3000W	3000W
Chuck	120mm Fully Sealed Pneumatic Chuck	240R Square and Round Chuck
Servo Motor and Drive	INOVANCE	INOVANCE

Model	S6012 Pro	S6024 Pro
Precision Reducer	DESBOER	DESBOER
Precision Toothed Rack	JT	JT
Precision Guide Rail	JW/ROUST	JW/ROUST
Semi-Automatic/ Full-Automatic Loading Device (Optional)	6m	6m
Bevel Cutting (Optional)	±45°	±45°

Performance Indexes

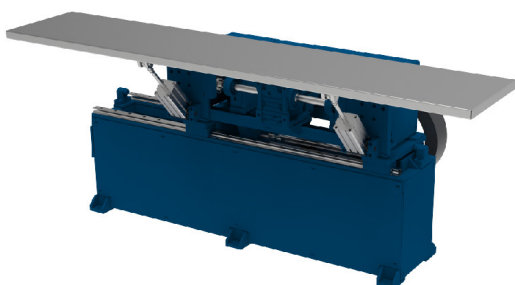
Equipment Model	S6012 Pro	S6024 Pro
Tube Specification (Full-Automatic Loading:)	Circular Tubes : $\phi 20\text{mm} \sim \phi 120\text{mm}$ Square Tubes: $\square 20\text{mm} \sim \square 120\text{mm}$	Circular Tubes $\phi 20\text{mm} \sim \phi 240\text{mm}$ Square Tubes: $\square 20\text{mm} \sim \square 240\text{mm}$
Tube Specification (Semi-Automatic Loading:)	Circular Tubes $\phi 20\text{mm} \sim \phi 120\text{mm}$ Square Tubes: $\square 10\text{mm} \sim \square 80\text{mm}$	Circular Tubes $\phi 20\text{mm} \sim \phi 240\text{mm}$ Square Tubes: $\square 20\text{mm} \sim \square 240\text{mm}$
Tail Length	$\geq 60\text{mm}$	$\geq 60\text{mm}$
Maximum Weight of a Single Tube	150kg	270kg
Chuck Rotation Speed	100rpm	100rpm
Floor Space of Main Unit	12m x 3m x 2.8m	12m x 3m x 2.8m

- Maximum clamping force up to 270kg, industry leading
- The front and rear chucks adopt a fully sealed, dust-proof structure that effectively isolates dust and reduces jamming
- The slant horizontal integral structure is more convenient for loading, and the loading time is greatly reduced
- Double roller jaws standard, higher cutting accuracy



- The front chuck has advanced collision avoidance cutting function to achieve the shortest tail length of 60mm

- The reducing wheel support has better wrapping performance, which can efficiently avoid shaking of the fine pipe, and the cutting accuracy is higher
- Servo follower, self-adapting to different pipe sizes, high degree of automation
- Automatic centering mechanism for self-centering of tubes



- The movable servo loading device can better support the cutting of the slender pipe and solve the cutting accuracy problem caused by the shaking of the slender pipe
- Automatic turning plate cutting, can ensure the continuous production of cutting

Optional Automatic Loading Device

- The automatic loading unit can support loading length of the pipe: 6m. Floor space: 7000mm X 2000mm
- The automatic loading unit adopts new design, the structure is sample, stable loading, and high performance cost ratio



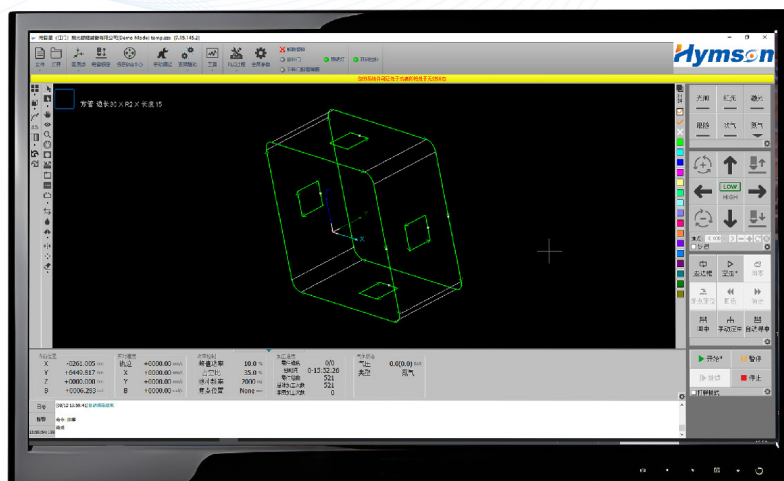
Machine with Semi Automatic Loading



Machine with Fully Automatic Loading

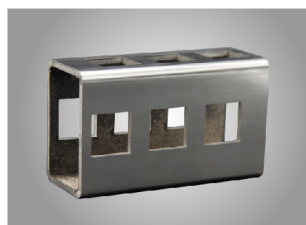
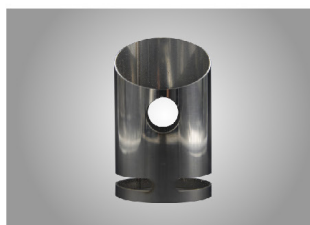
CNC Numerical Control System

- FSCUT laser cutting control system, developed on the basis of Windows 10 operating system, communicates through Ethercat bus and integrates laser cutting modules with special functions. The simple and concise interface, power and practical functions, touch display screen and wireless keyboard and mouse make it easy to operate



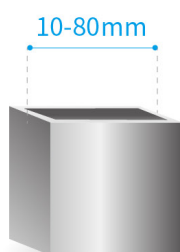
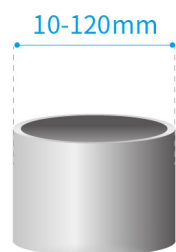


Samples

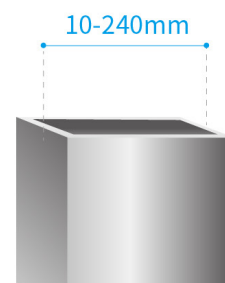
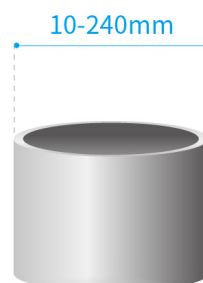


Cutting Ability


S6012 Pro




S6024 Pro





 No. 18, Jintong 8th Road, Pengjiang District, Jiangmen City, Guangdong, China
No. 66, Jintan Street, Jintan District, Changzhou City, Jiangsu, China

 hymsonlaser.net

 info.bj@hymson.com

 Hymson Laser  Hymson Laser  Hymson Laser