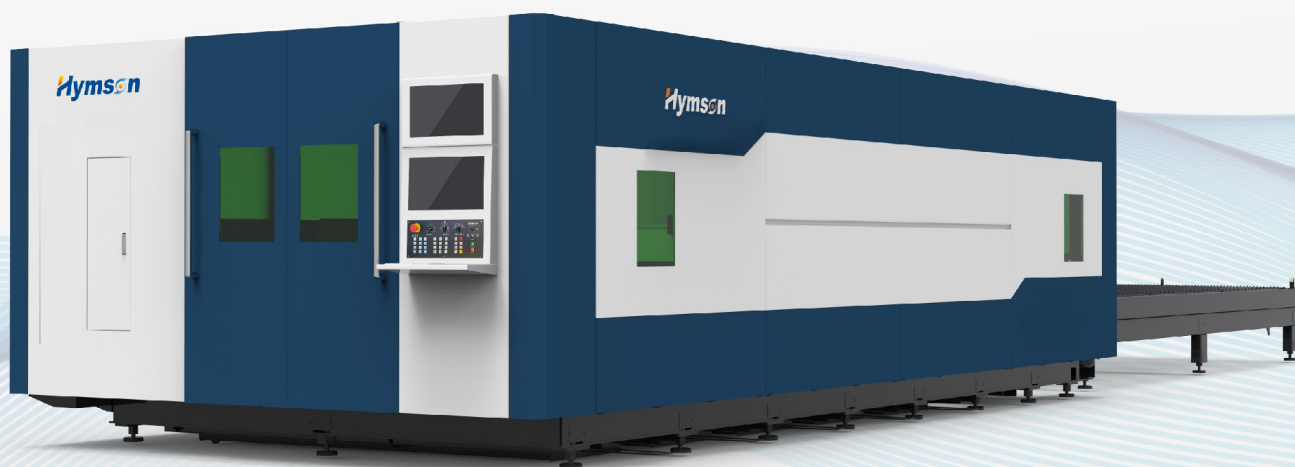




PROVIDER OF LASER & AUTOMATION
INTEGRATED SOLUTIONS

HF-G SERIES

High Configuration Flagship Laser Cutting Machine



COMPANY INTRODUCTION



Hymson Laser Technology Group Co.,Ltd founded in 2008, is a national high-tech enterprise, which integrates research and development, manufacturing, sales and service in laser and automation integrated solutions provider.



11
Subsidiaries



7000+
Employees Global



Hundreds
Patents



Thousands
Cooperative Enterprises



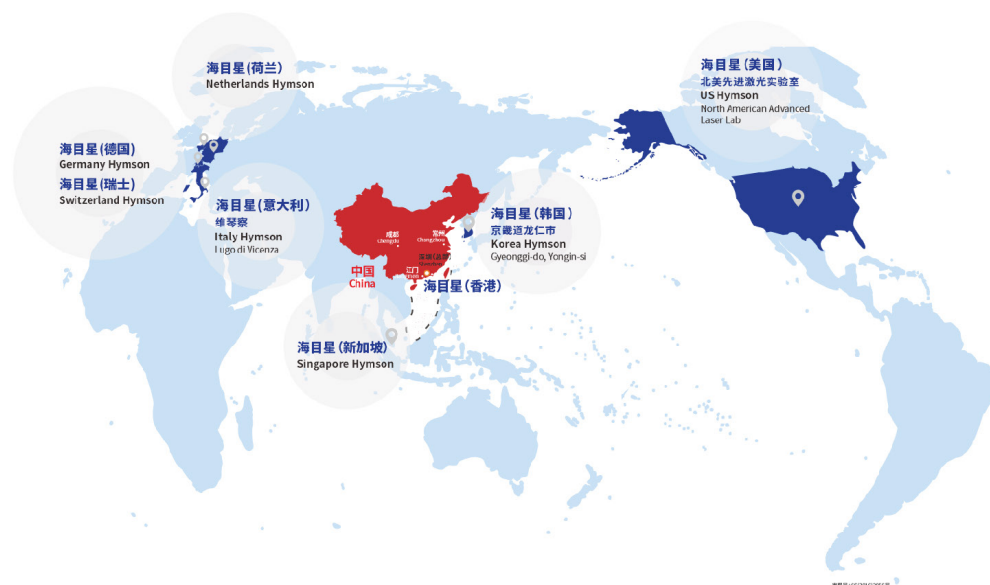
400 million
R&D Investment



40+
Global Service Centers

AS A GLOBAL ENTERPRISE

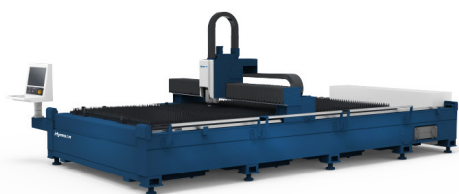
WE PROVIDE HIGH QUALITY AND EFFICIENT PRE-SALES AND AFTER-SALES SERVICE



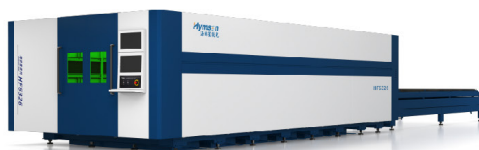
**Transforming the Global Equipment Landscape
Advancing Human Intelligent Manufacturing**

PRODUCT CATALOG

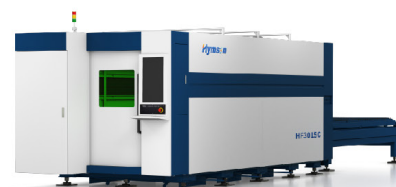
SHEET METAL LASER CUTTING MACHINE



HF-A SEIRES(Single Platform)

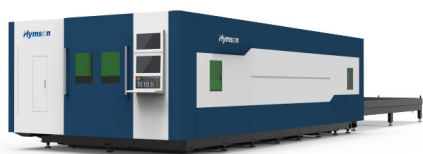


HF-B SERIES(High Power)

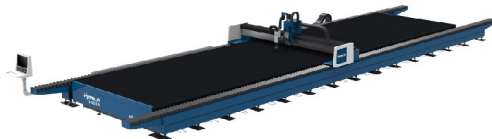


HF-C SERIES(Dual-platform)

SHEET METAL LASER CUTTING MACHINE



HF-G SERIES(Flagship Product)



HF-T SERIES(Large Format)



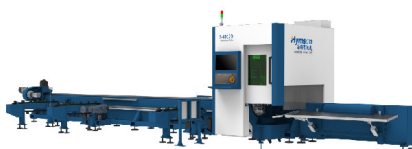
HP SERIES

SPECIAL PROFILE LASER CUTTING MACHINE

TUBE METAL LASER CUTTING MACHINE



MP SERIES(Professional)



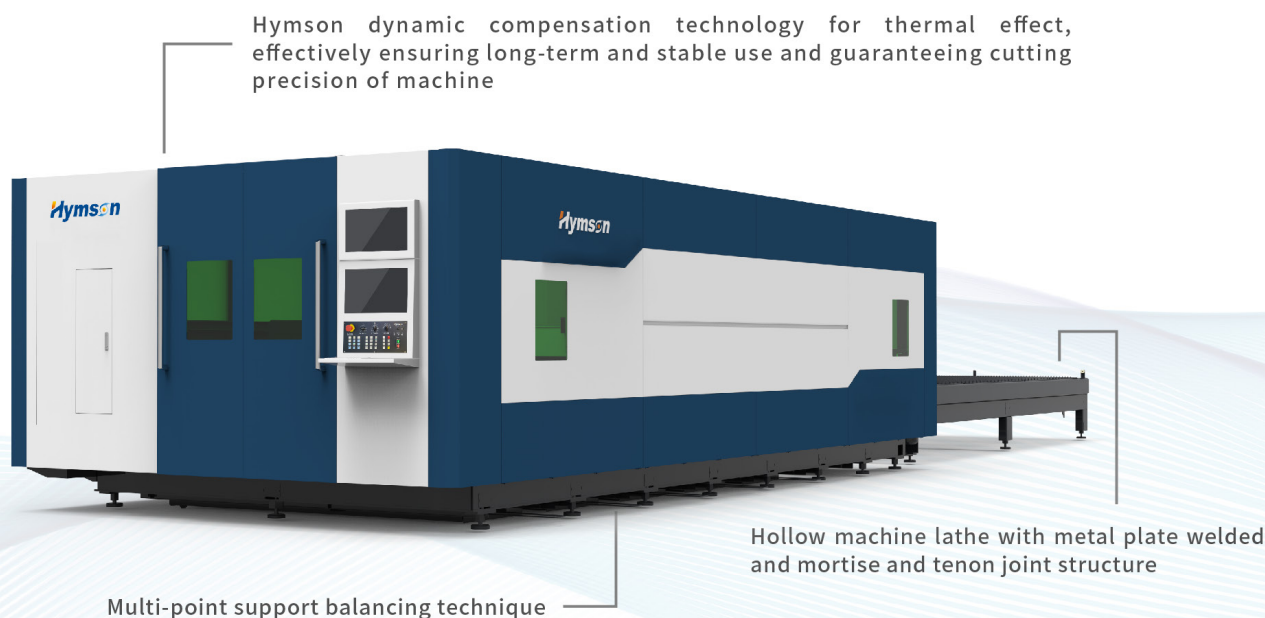
S SERIES(Standard)



TP SERIES(Heavy-duty)

HF-G SERIES

High Configuration Flagship Laser Cutting Machine



Core Configuration

Unit	Name	Model / Specification
I. Control Programming	Control System	Beckhoff
	Machine Lathe	HF-G Honeycomb Heavy Duty Lathe
	Servo Motor and Drive	REXROTH
	Precision Reducer	APEX
II. Mechanical Drive	Precision Toothed Rack	YYC/ATLANTA
	Precision Guide Rail	HIWIN

Unit	Name	Model / Specification
II. Mechanical Drive	Table Type	Shuttle table
III. Pneumatic Control	Intelligent Pneumatic System	SMC
IV. Optical System Drive	Fiber Laser	≥6000W
	Auto Zoom Cutting Head	HYMSON
V. Dedusting System	Intelligent Zoned Exhausting System	HYMSON
	Dedusting Fan	HYMSON

Performance Indexes

Equipment Model	HF3015G	HF4020G	HF6025G	HF8025G
Power	3000W-80000W	3000W-80000W	3000W-80000W	3000W-80000W
Effective Cutting Range	3000mmX1500mm	4000mmX2000mm	6000mmX2500mm	8000mmX2500mm
X/Y-axis Positioning Accuracy	±0.03mm/m	±0.03mm/m	±0.03mm/m	±0.03mm/m
X/Y-axis Repositioning Accuracy	±0.02mm	±0.02mm	±0.02mm	±0.02mm
Maximum Speed of X/Y-axis Linkage Positioning	169m/min	169m/min	140m/min	140m/min
Maximum X/Y-axis Acceleration	1.5g	1.5g	1.2g	1.2g
Floor Space of Whole Machine	8330mmX5700mm	10500mmX5900mm	15000mmX7000mm	20000mmX7000mm

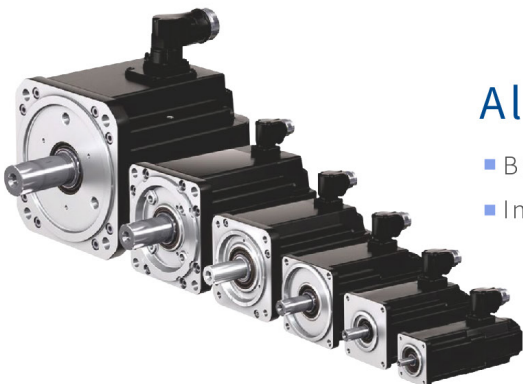
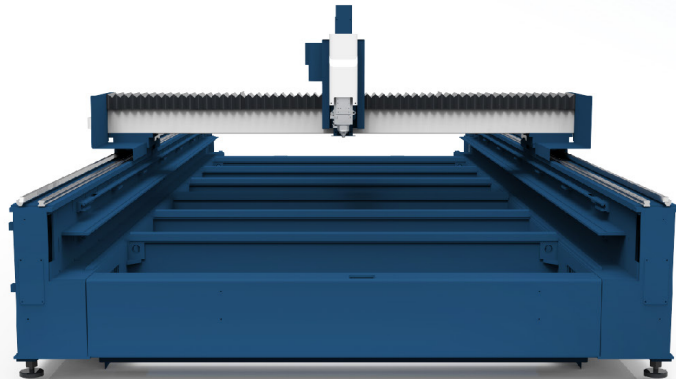
Upgraded Machine Lathe with Level-up Rigidity

- Upgraded Hymson's patented hollow structure design to reduce heating area and reduce the impact of heat on the machine, thus prolongs the life of the machine
- Adopting high strength sheet for welding to guarantee stable structure of the machine and long-time and stable operation of the equipment
- The machine body processed has undergone high temperature treatment to eliminate internal stress caused by the material itself and welding to the utmost extent, which ensures high strength, high precision and high tolerance



Super Dynamic Performance

- Maximum linkage speed can achieve 169m/min and the maximum linkage acceleration is 1.5G, easily achieve high speed cutting
- Adopting the thermal dynamic compensation technology to offset the impact caused by the degree of reference parallelism on both sides of the machine body in long-term use, thus guarantees cutting precision

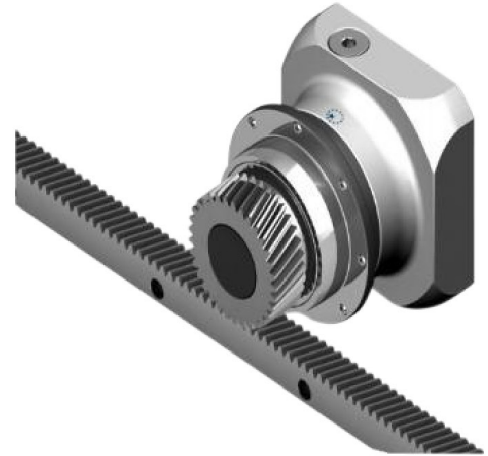


Alpha Brand Servo Motor

- Branded servo motor and drive, with high encoder resolution
- Integrating high dynamics, compact structure and energy efficiency

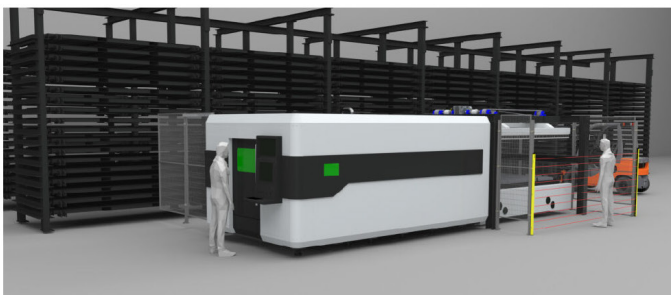
High Configuration Gear Drive

- Precision machined high precision pinions and racks
- Super high matching rate and precision, high bite rate
- Effectively reducing driving torque and eliminating vibration
- Adopting double drive gantry motion system for higher acceleration and faster movement speed



BECKHOFF EtherCAT Bus Control

- All modules of the EtherCAT bus control platform, as Hymson's super brain, have been developed based on this technology. A CPU completes all the data calculation, which is secure and reliable. The platform has self-diagnosis function and is highly open
- The equipment applies the Beckhoff numerical control system and has a large-screen display. It is a professional laser cutting system developed based on the Windows operating system and integrating many laser cutting modules with dedicated functions. Equipped with a wireless keyboard and a wireless mouse, the equipment is easy to operate




- The system can be combined with automatic loading and unloading production lines and flexible production lines of FMS laser cutting to support the automated production



Figure 10 consists of three horizontal bar charts, each representing a different laser power level: 12000 W, 20000 W, and 30000 W. The x-axis for all charts is 'Laser Spot Size' in millimeters, ranging from 0mm to 115mm with major ticks every 10mm. Each chart displays four horizontal bars of increasing length and decreasing color intensity (from dark blue to light grey). A small triangle is positioned at the end of each bar, indicating a specific spot size value. The data is summarized in the table below:

Laser Power (W)	Bar 1 (Dark Blue)	Bar 2 (Dark Grey)	Bar 3 (Medium Grey)	Bar 4 (Light Grey)
12000	~40mm	~42mm	~38mm	~20mm
20000	~80mm	~105mm	~60mm	~25mm
30000	~80mm	~110mm	~60mm	~25mm



 No. 18, Jintong 8th Road, Pengjiang District, Jiangmen City, Guangdong, China
No. 66, Jintan Street, Jintan District, Changzhou City, Jiangsu, China

 hymsonlaser.net

 info.bj@hymson.com

 Hymson Laser  Hymson Laser  Hymson Laser