



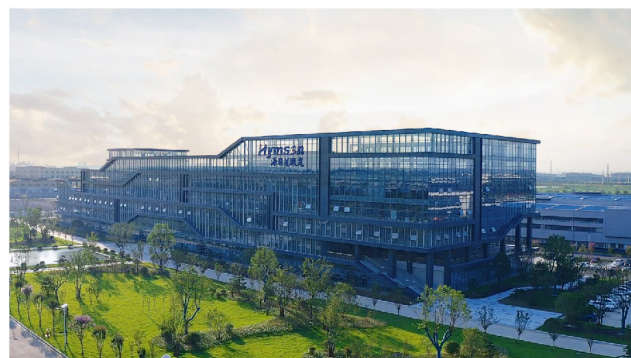
PROVIDER OF LASER & AUTOMATION
INTEGRATED SOLUTIONS

FP SERIES

Four-chuck Laser Tube Cutting Machine



COMPANY INTRODUCTION



Hymson Laser Technology Group Co., Ltd founded in 2008, is a national high-tech enterprise, which integrates research and development, manufacturing, sales and service in laser and automation integrated solutions provider.



11
Subsidiaries



7000+
Employees Global



Hundreds
Patents



Thousands
Cooperative Enterprises



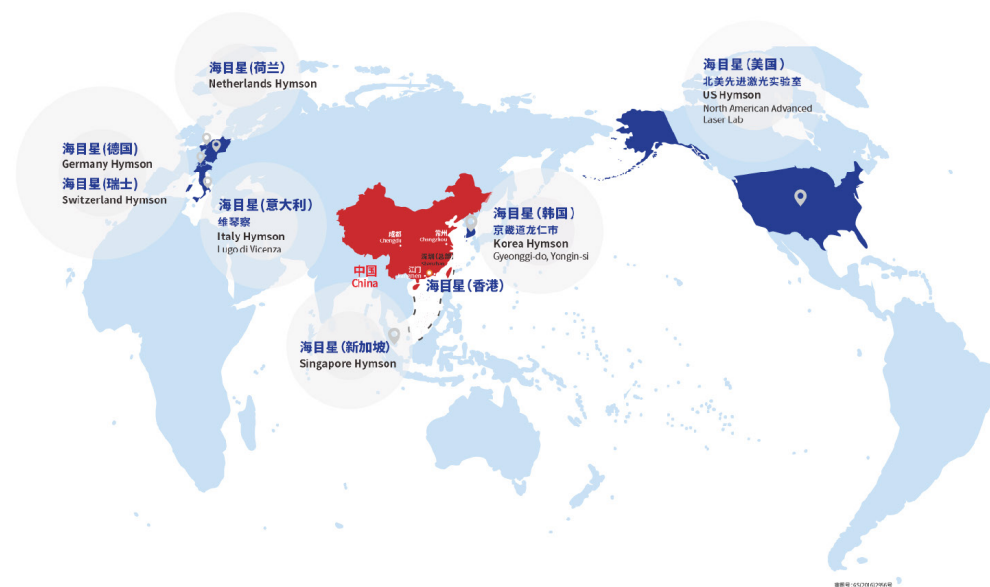
400 million
R&D Investment



40+
Global Service Centers

AS A GLOBAL ENTERPRISE

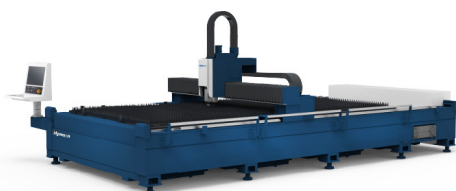
WE PROVIDE HIGH QUALITY AND EFFICIENT PRE-SALES AND AFTER-SALES SERVICE



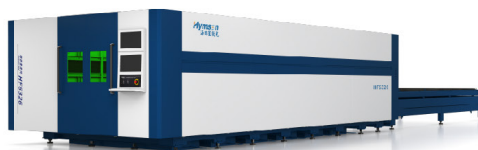
Transforming the Global Equipment Landscape
Advancing Human Intelligent Manufacturing

PRODUCT CATALOG

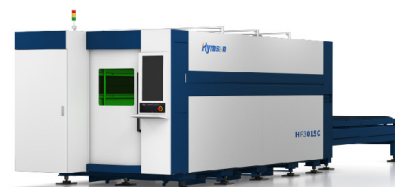
SHEET METAL LASER CUTTING MACHINE



HF-A SEIRES(Single Platform)

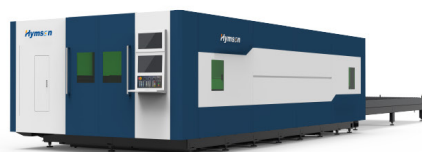


HF-B SERIES(High Power)

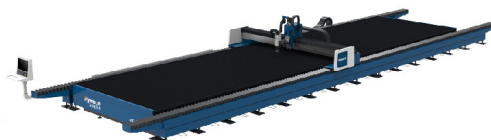


HF-C SERIES(Dual-platform)

SHEET METAL LASER CUTTING MACHINE



HF-G SERIES(Flagship Product)



HF-T SERIES(Large Format)



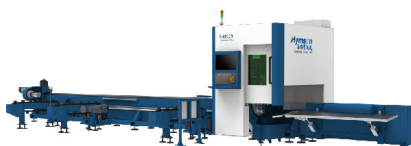
HP SERIES

SPECIAL PROFILE LASER CUTTING MACHINE

TUBE METAL LASER CUTTING MACHINE



MP SERIES(Professional)



S SERIES(Standard)



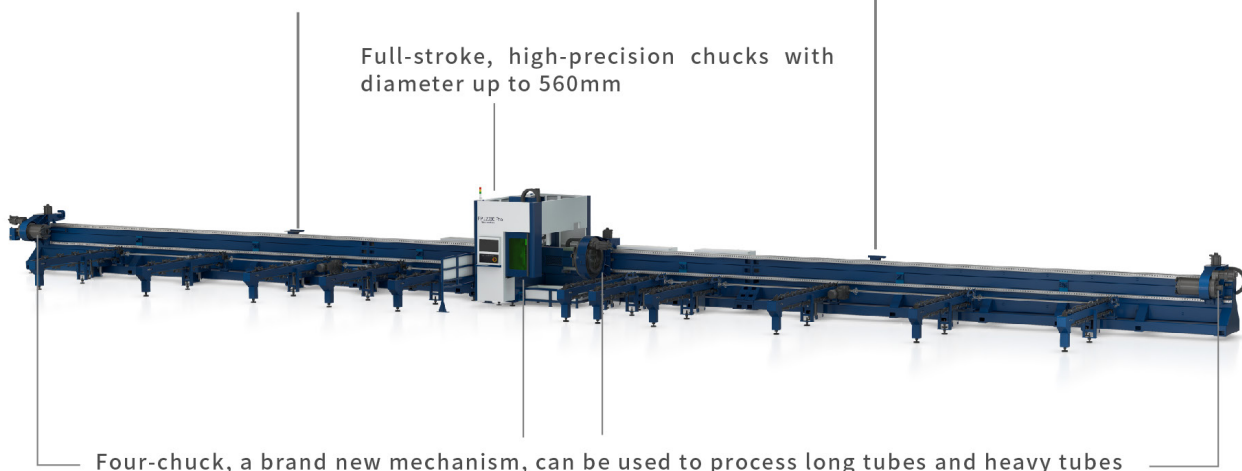
TP SERIES(Heavy-duty)

FP SERIES

Four-chuck Laser Tube Cutting Machine

The product has rich optional accessories. It is your ideal production tool for high efficiency laser processing and pipe cutting

Full-stroke, high-precision chucks with diameter up to 560mm



Four-chuck, a brand new mechanism, can be used to process long tubes and heavy tubes

Core Configuration

Model	FP12036	FP12056
Control System	FSCUT	FSCUT
Cutting Head	Hymson	Hymson
Fiber Laser	6000W-20000W	6000W-20000W
Chuck	360mm Fully Sealed Pneumatic Chuck	560mm Fully Sealed Pneumatic Chuck
Servo Motor and Drive	INOVANCE	INOVANCE

Model	FP12036	FP12056
Precision Reducer	DESBOER	DESBOER
Precision Toothed Rack	JT	JT
Precision Guide Rail	JW/ROUST	JW/ROUST
Loading Components	12m	12m
Unloading Components	0-12m	0-12m

Performance Indexes

Equipment Model	FP12036	FP12056
Tube Specification	Circular Tubes: $\Phi 20\text{mm} \sim \Phi 360\text{mm}$ Square Tubes: $\square 20\text{mm} \sim \square 360\text{mm}$	Circular Tubes: $\Phi 50\text{mm} \sim \Phi 560\text{mm}$ Square Tubes: $\square 50\text{mm} \sim \square 400\text{mm}$
Tail Length	$\geq 0\text{mm}$	$\geq 0\text{mm}$
Maximum Weight of a Single Tube	1.2t	2t
Acceleration	0.6g	0.3g
Chuck Rotation Speed	60rpm	50rpm

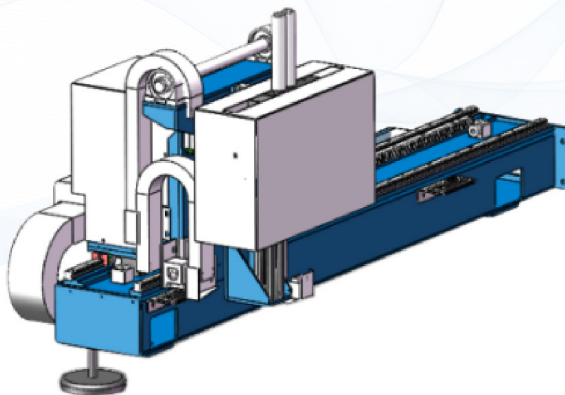
High Strength Machine Lathe

- The main body of the laser machine adopts the honeycomb welded structure and the internal stress is released through annealing treatment after welding
- Segmented splicing machine lathe, long to 40m



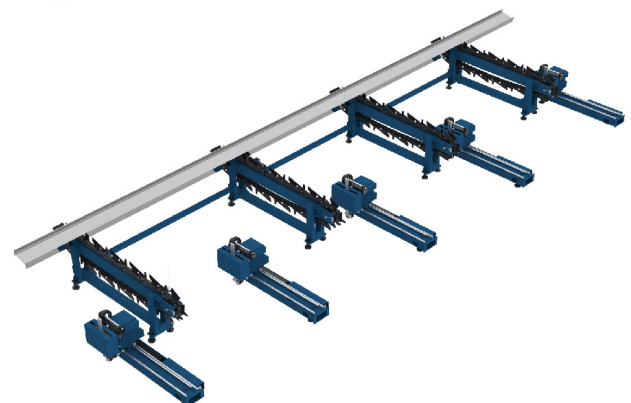
Auxiliary Support

- The auxiliary support adopts servo follow-up to effectively prevent the pipe from swaying from side to side when rotating at high speed, thus guarantees the precision of turning during cutting
- The auxiliary support plays the role of guiding and supporting during loading



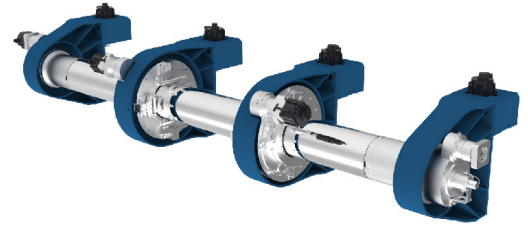
Multi-stage Independent Loading Mechanism

- Multi-stage independent segmental discharging and loading mechanism to meet the needs of automatic loading of pipes of different lengths
- Maximum weight of single pipe can reach 1.2T, can support the loading cache of 4 pipes



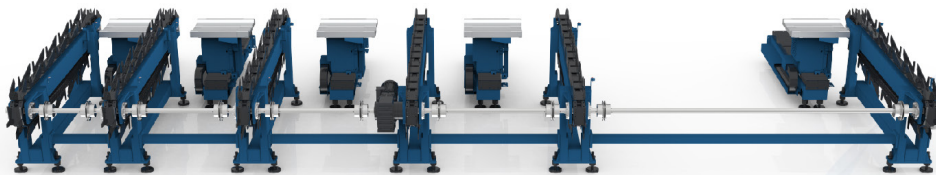
Four-Chuck Structure

- Four-chuck structure for high effective processing of heavy tubes, one-piece chuck bearing housing, high load capacity and high rigidity
- The maximum clamping stroke is 560mm and can meet the cutting needs of most pipe types
- Can achieve the shortest tail length of 0mm, increase material utilization
- Maximum processing tube weight up to 2T, length up to 12000mm
- The rear chuck adopts the intelligent dust-exhaust system to greatly improve the dust prevention effect



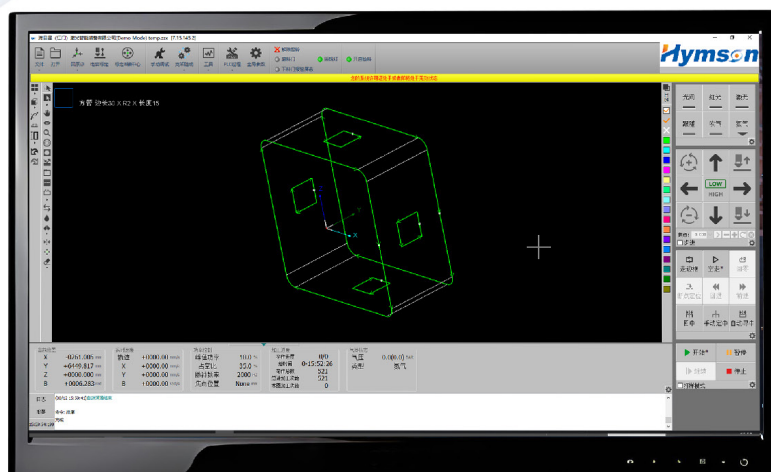
Unloading Mechanism

- Multi-stage independent segmented discharging and unloading device, modular design, can realize any length combination of the tube
- Supports 4-piece pipe unloading cache to enhance processing efficiency



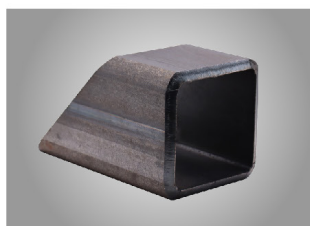
FSCUT control system

- FSCUT laser cutting control system, developed on the basis of Windows 10 operating system, communicates through Ethercat bus and integrates laser cutting modules with special functions. The simple and concise interface, power and practical functions, touch display screen and wireless keyboard and mouse make it easy to operate





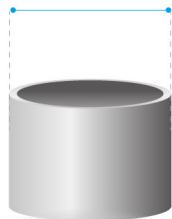
Samples



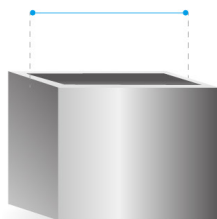
Cutting Ability

FP12036

20-360mm

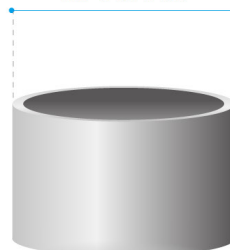


20-360mm

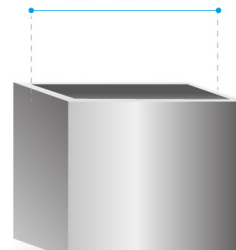


FP12056


50-560mm



50-400mm





 No. 18, Jintong 8th Road, Pengjiang District, Jiangmen City, Guangdong, China
No. 66, Jintan Street, Jintan District, Changzhou City, Jiangsu, China

 hymsonlaser.net

 info.bj@hymson.com

 Hymson Laser  Hymson Laser  Hymson Laser