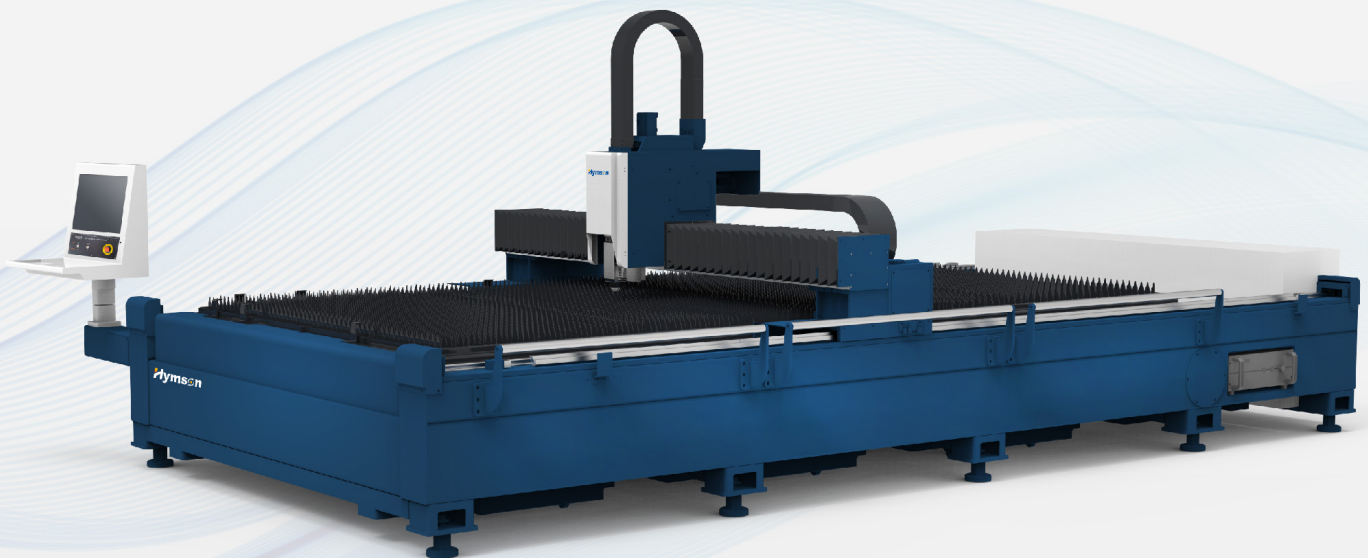




PROVIDER OF LASER & AUTOMATION
INTEGRATED SOLUTIONS

HF-A SERIES

Single platform fiber laser cutting machine



<https://www.hymsonlaser.net/>

COMPANY INTRODUCTION



Hymson Laser Technology Group Co.,Ltd founded in 2008, is a national high-tech enterprise, which integrates research and development, manufacturing, sales and service in laser and automation integrated solutions provider.



11
Subsidiaries



7000+
Employees Global



Hundreds
Patents



Thousands
Cooperative Enterprises



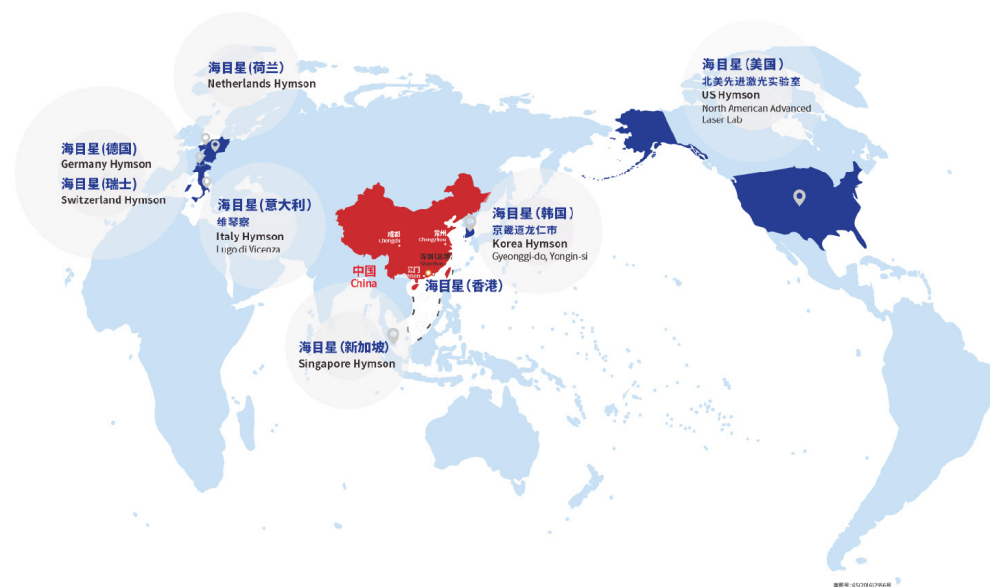
400 million
R&D Investment



40+
Global Service Centers

AS A GLOBAL ENTERPRISE

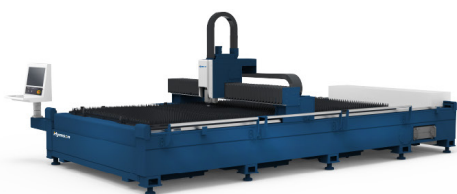
WE PROVIDE HIGH QUALITY AND EFFICIENT PRE-SALES AND AFTER-SALES SERVICE



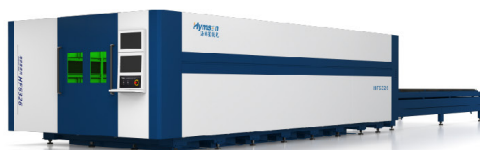
**Transforming the Global Equipment Landscape
Advancing Human Intelligent Manufacturing**

PRODUCT CATALOG

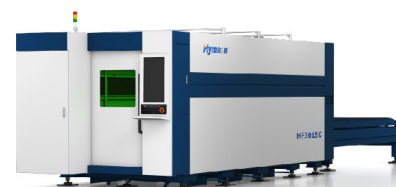
SHEET METAL LASER CUTTING MACHINE



HF-A SEIRES(Single Platform)

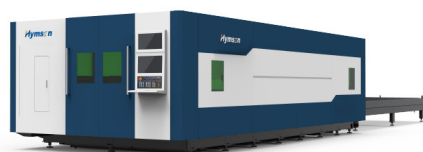


HF-B SERIES(High Power)

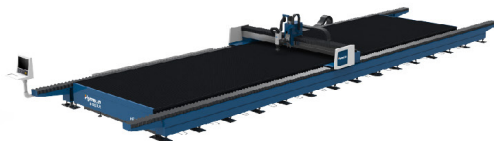


HF-C SERIES(Dual-platform)

SHEET METAL LASER CUTTING MACHINE



HF-G SERIES(Flagship Product)



HF-T SERIES(Large Format)



HP SERIES

SPECIAL PROFILE LASER CUTTING MACHINE

TUBE METAL LASER CUTTING MACHINE



MP SERIES(Professional)



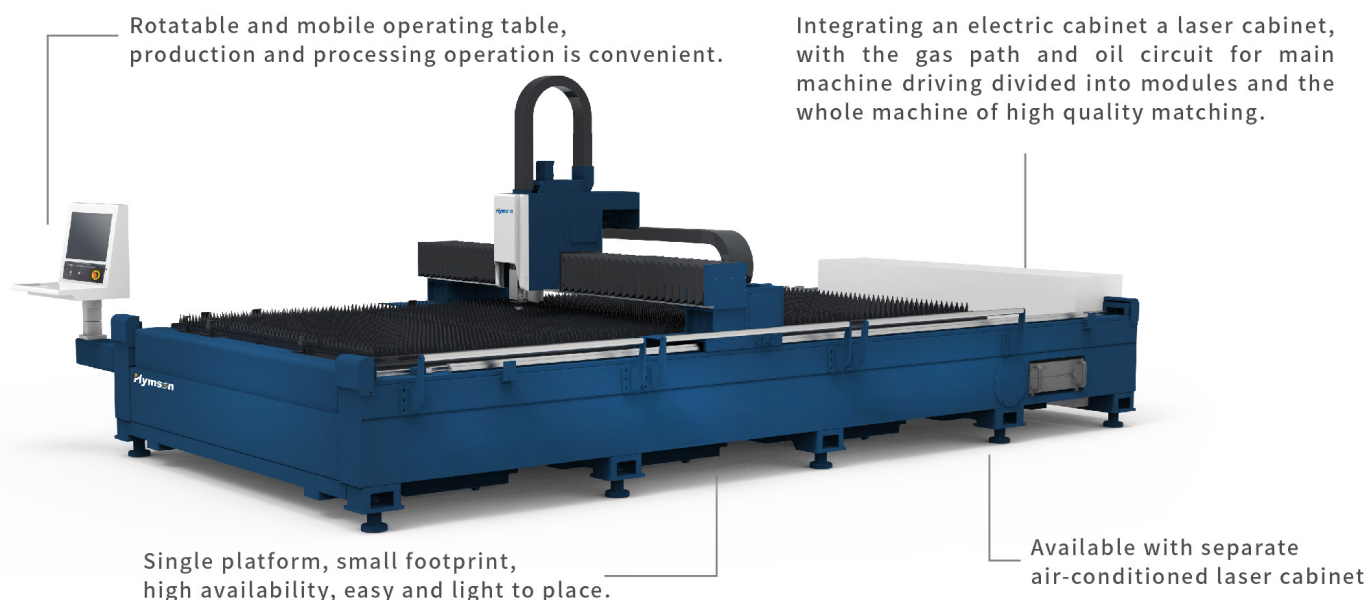
S SERIES(Standard)



TP SERIES(Heavy-duty)

HF-A SERIES

Single platform fiber laser cutting machine



Core Configuration

Unit	Name	Model / Specification
I. Control Programming	Control System	FSCUT
	Machine Lathe	HF-A Honeycomb Heavy Duty Lathe
	Servo Motor and Drive	INOVANCE
II. Mechanical Drive	Precision Reducer	DESBOER
	Precision Toothed Rack	JT
	Precision Guide Rail	JW/ROUST

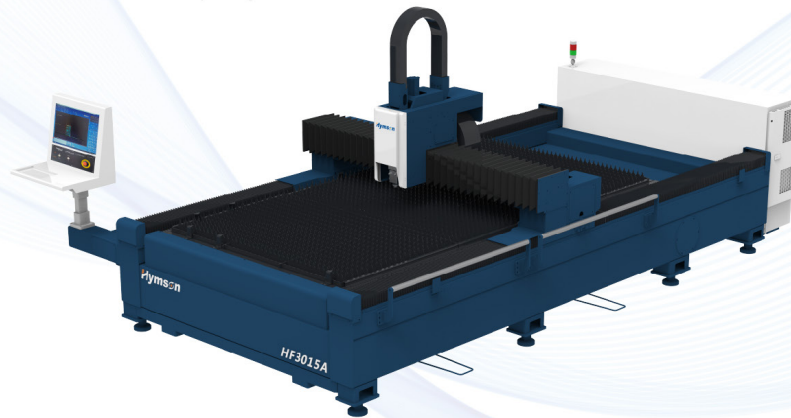
Unit	Name	Model / Specification
II. Mechanical Drive	Table Type	Single Table Type
III. Pneumatic Control	Intelligent Pneumatic System	SMC
IV. Optical System Drive	Fiber Laser	≤6000W
	Auto Zoom Cutting Head	HYMSON
V. Dedusting System	Intelligent Zoned Exhausting System	HYMSON
	Dedusting Fan	HYMSON

Performance Indexes

Equipment Model	HF3015A	HF4020A	HF6020A	HF6025A	HF8025A
Power	1500W-6000W	1500W-6000W	1500W-6000W	1500W-6000W	1500W-6000W
Effective Cutting Range	3000mmX1500mm	4000mmX2000mm	6000mmX2000mm	6000mmX2500mm	8000mmX2500mm
X/Y-axis Positioning Accuracy	±0.03mm/m	±0.03mm/m	±0.03mm/m	±0.03mm/m	±0.03mm/m
X/Y-axis Repositioning Accuracy	±0.02mm	±0.02mm	±0.02mm	±0.02mm	±0.02mm
Maximum Speed of X/Y-axis Linkage Positioning	110m/min	110m/min	110m/min	100m/min	100m/min
Maximum X/Y-axis Acceleration	1.2g	1.0g	1.0g	1.0g	1.0g
Floor Space of Main unit	4700mmX2600mm	5600mmX3000mm	8000mmX3000mm	8700mmX3900mm	10800mmX3900mm

Modular design

- Several components with independent functions are integrated scientifically and systematically for high quality matching of the whole machine
- With high strength and high reliability of the machine guaranteed, the product development speed is improved to respond to market demand rapidly



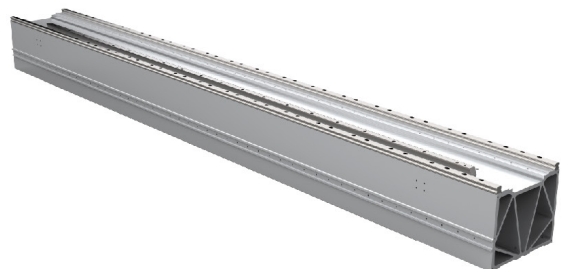
High Strength And Tolerance Machine Body

- Welded with high strength metal plate
- Undergoes high temperature annealing treatment
- Undergone data simulation analysis and inspection of durability to guarantee long-time operation

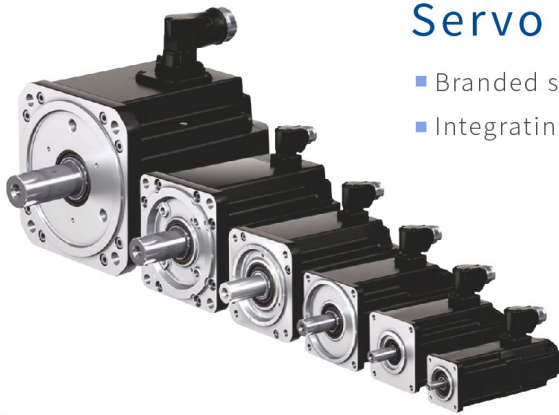


Hymson's Patented Structural Design Cross Beam

- Light overall mass, high tensile strength and superior dynamic performance
- Through simulated data analysis and testing of different models ,ensuring quality, rigidity and dynamic nature in long-time operation



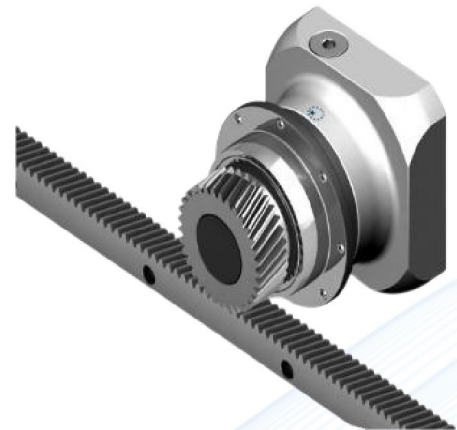
Servo Motor



- Branded servo motor and drive, with high encoder resolution
- Integrating high dynamics, compact structure and energy efficiency

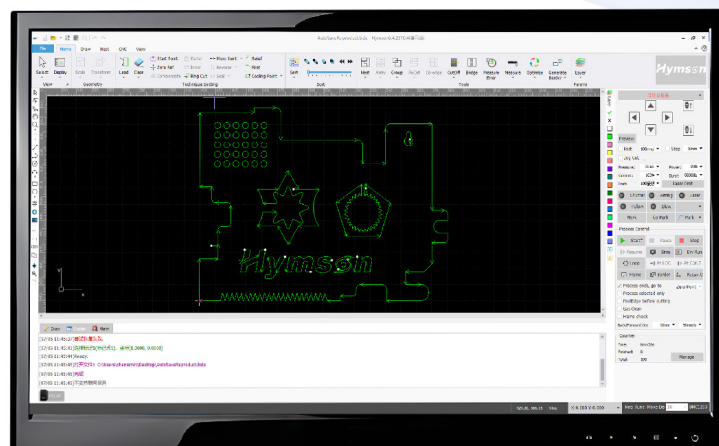
Precision Gear Drive

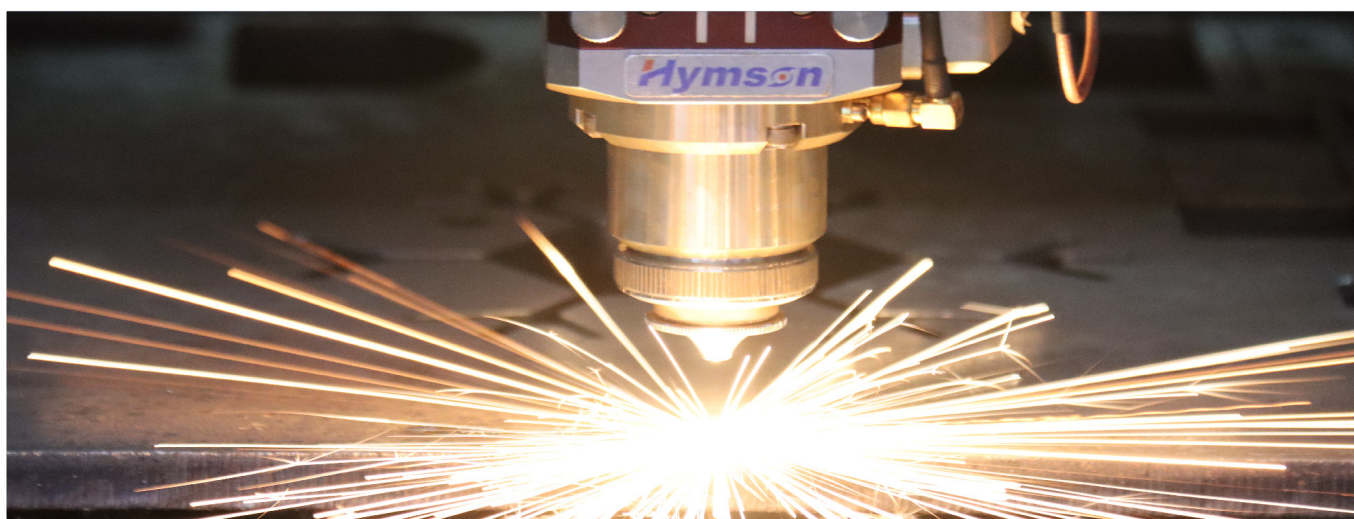
- Precision machined high precision pinions and racks
- Super high matching rate and precision, high bite rate
- Effectively reducing driving torque and eliminating vibration
- Adopting double drive gantry motion system for higher acceleration and faster movement speed



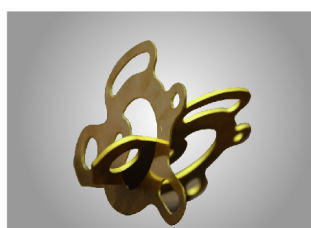
CNC Numerical Control System

- FSCUT, applied to the flat laser cutting system, mainly contains the laser cutting technology processing, common nesting functions and laser processing control. The main functions include the graphic processing, parameter setting, custom cutting process editing, nesting, path planning, simulation, and cutting process control.

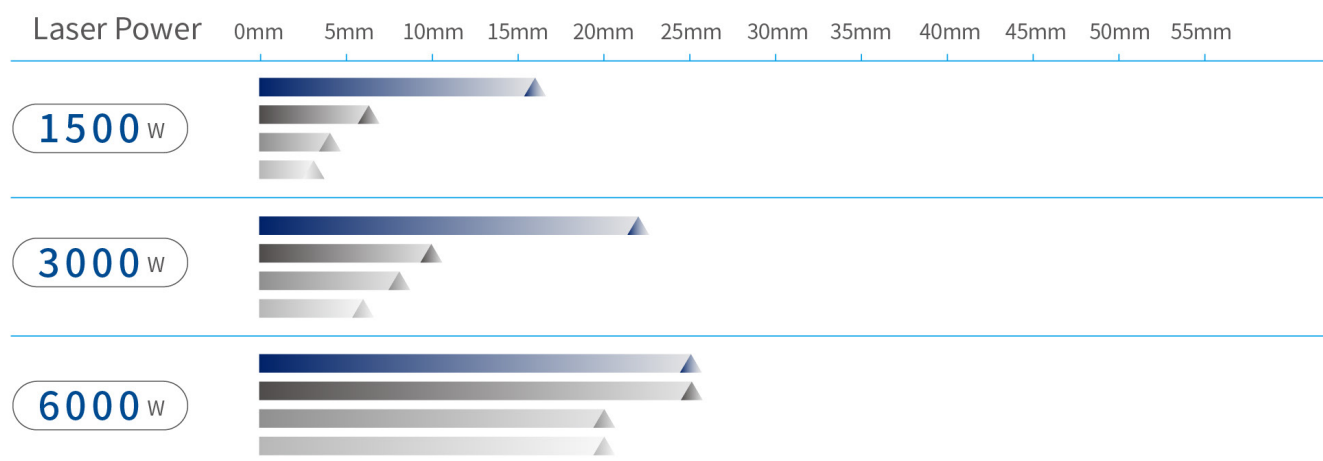





Samples



Cutting Ability





 No. 18, Jintong 8th Road, Pengjiang District, Jiangmen City, Guangdong, China
No. 66, Jintan Street, Jintan District, Changzhou City, Jiangsu, China

 hymsonlaser.net

 info.bj@hymson.com

 Hymson Laser  Hymson Laser  Hymson Laser